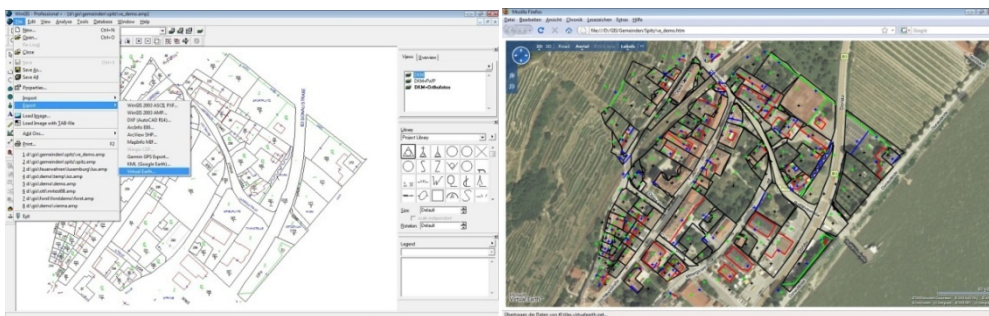


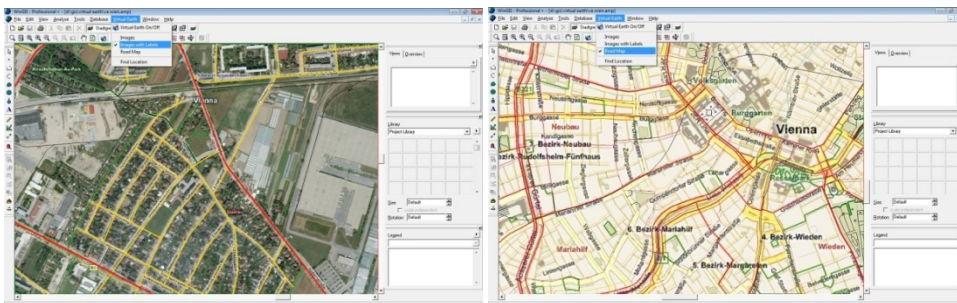
PROGIS NEWS

“WinGIS” enables Microsoft “BING” to become a full GIS

The decentral geo-database MS “BING” got coupled with “WinGIS” - a PC GIS system - either as standalone GIS-system or integrated into 3rd parties applications, which can be developed by Microsoft partners with the help of the “WinGIS” developer component “AXWinGIS”. Thus “BING” becomes “GIS enabled”. The user benefits from the visualization of his data over a “BING”-map by keeping his personal data local. Suddenly the principle of PC and Internet or bottom up and top down works also for GIS.



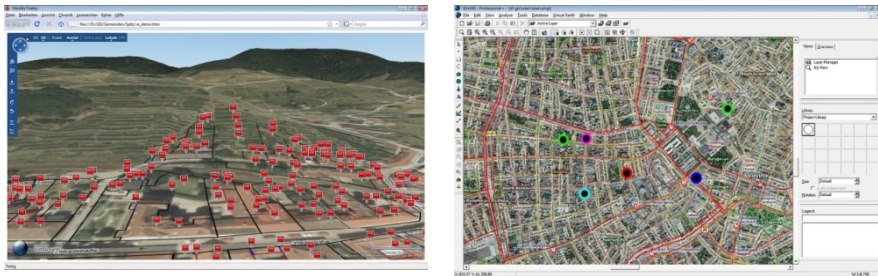
During the last months PROGIS has developed the technological link to the Microsoft “BING” technology. This development has been taken place in two steps. At first, a technology allowing **exporting any “WinGIS” project** or any project developed within the “AXWinGIS” to “BING” to use all benefits that raster or additional vector (e.g. road maps) information of “BING” provides to users. The result of this export function is an HTML document that can be embedded into any web page.



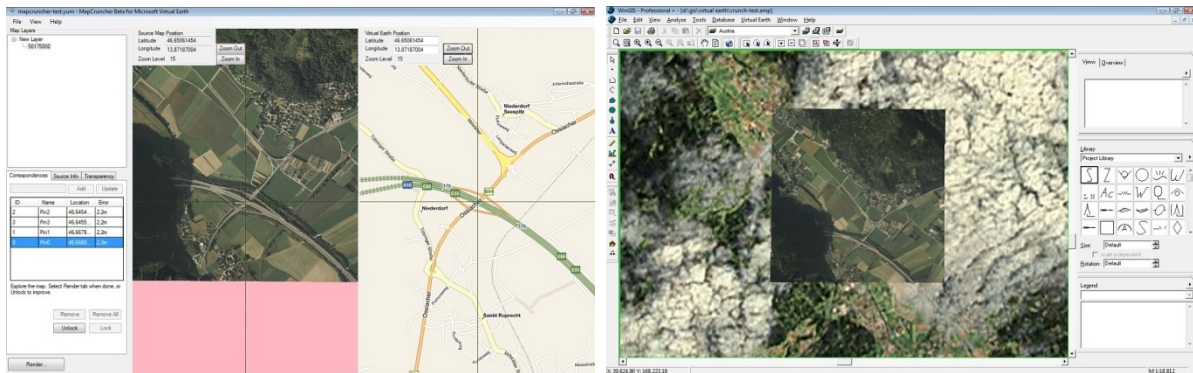
The second development was **enabling “BING” to become the raster layer within “WinGIS”** or any “WinGIS” application. This innovation means that all PROGIS technology can work in any country of the world where MS “BING” data are available. Depending on the quality of these data, users can start their project immediately without buying expensive raster data (satellite images, aero-images). In the case of older images or images with too less resolution, these images will be the background information only. Updated vector data show the actual situation and are further updated with GPS/dGPS data based on recent information.

There are 3 types of “BING” maps available:

- Images only
- Images with labels (streets, cities, ...)
- Road map

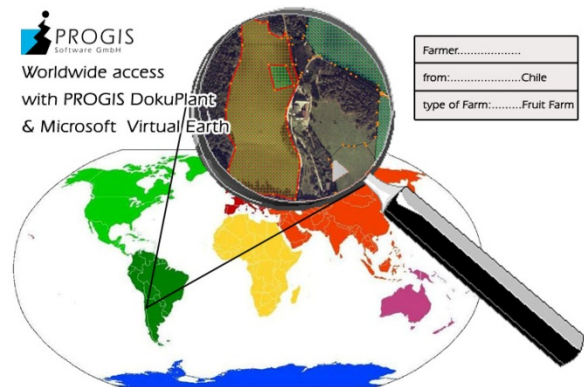


A so called "crunch" technology, where PROGIS delivers the services, other **images of third parties can be embedded** into the complete model. The 3rd party image data will be embedded and the payment will be organized on a click (transaction) basis. Requests of image owners are welcome.



Embedded third party image – of course complete images sets also can be embedded.

"WinGIS" technology is also integrated into all PROGIS applications for rural area management as there are: AGROffice, DokuPlant., ForestOffice, Logistics, Risk-management etc. Partner enquiries for application development are welcome; the "WinGIS" developer component "AXWinGIS" technology allows to integrate the partner's database applications into "WinGIS" and to generate in this way new geo-enabled applications for different markets.



"BING" data are priced with a click-price and herewith for most of the users cheap. For more details ask at: office@progis.com or call at +43/4242/26332.

◆ PROGIS™ Software GmbH, Postgasse 6, 9500 Villach, AUSTRIA

Tel. +43 (0) 4242-26332, Fax +43-(0)4242-263327, email: office@progis.com, Internet:<http://www.progis.com>
Konto Nr.: Raiffeisenbank Villach, 512.384, BLZ 39496 Landesgericht Klagenfurt, FN 187888g, UID-Nr.: ATU48814207