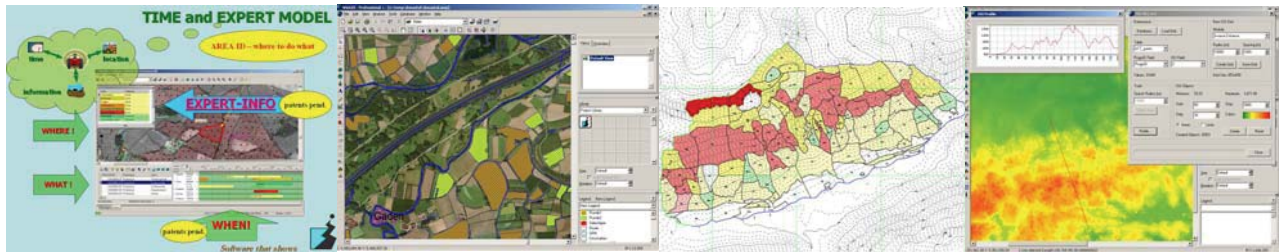


# “Hunt - GIS” Solution



## Hunting ground:

The basis is a map with:

- orthophoto (via local data supplier)
- cadastral data (via local cadastral office)
- or optional a google-earth image

Following visualization are possible constitutive on the basis of that map:

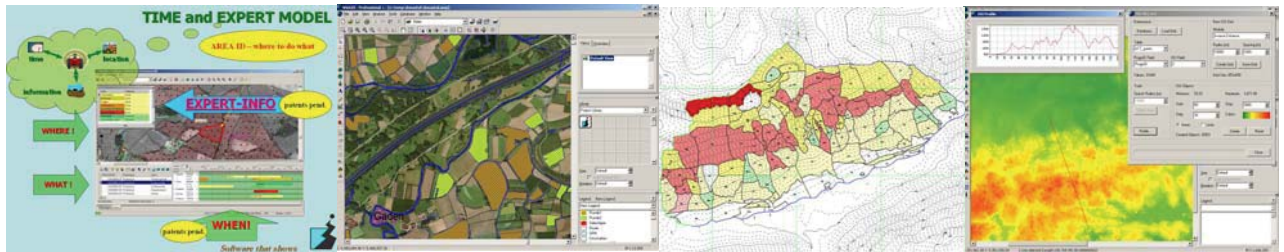
- hunt frontiers (land register)
- hunting kit with data symbols like
  - cratch
  - raised hides
  - base hides
  - shooting boxes
  - etc.
- observations with GPS supported involvement of photos/videos
- firings broken down into
  - years
  - wild species
  - male/female
- neighbours with agreements
  - hunter emergency ways
  - other agreements

### Hardware requirements:

GPS (with EGNOS-correction signal) positional accuracy <1-2 meter, PC/Notebook with at least 120 MB free hard-disk storage and at least 512 MB RAM (random access memory).

### Software requirements:

PROGIS WinGIS standard incl. IDB  
GPS/Text Import



## Further application solutions

Following further applications can be offered for huntership and other user groups in rural areas:

- GIS application for **regional professional hunters**
  - including data aggregation from cantons
- GIS application for **local professional hunters**
  - including data aggregation from gamekeeper rings
  - and data transfer to regional professional hunter
- GIS application for **gamekeeper managers**
  - including data aggregation from hunting grounds
  - and data transfer to local professional hunter
- GIS application for **hunting grounds/legal hunters**
  - and data transfer to gamekeeper manager

The applications should integrate all current necessary lists and messages (firing plan, firing list, other messages), and also create thematic analyses automatically combined with GIS, e.g.:

- colouring according to wild species at firing plan
- colouring according to declared wild density/ha
  - per wild species
- colouring according to firing per ha
  - per wild species
- colouring according to game bite situation
- intermediate messages with fulfilled firing in % etc.

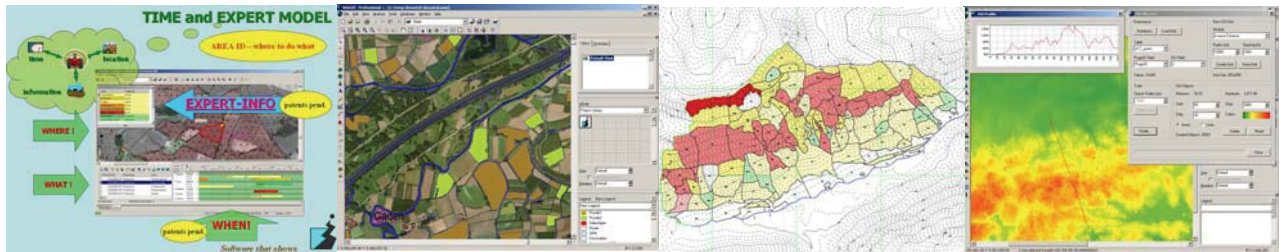
The database and GIS connection enables to define any thematic maps and to analyse them in the following.

The following is possible for hunting grounds with specific hunting ground applications: to enter cartographically the hunting ground, to localize firings, to connect simple GPS-units (e.g. for DGPS documentation with positional accuracy of 1-2m) for automatically gathering of hunting walks and distinctions in a cartographic way.

The detailed adaption of regional specifications has to be done with the respective huntership by creating a functional specification.

The used products in detail are:

- WinGIS Professional+ and application for **regional professional hunters**
- WinGIS Professional and application for **local professional hunters**



- WinGIS and application for **gamekeeper managers**
- WinMAP and application for **hunting grounds**
  - Software upgrade for the hunting ground
    - from WinMAP to WinGIS
    - add. DGPS connection
    - add. connection to an easy forest software kit
    - add. connection to traditional forest software kit



**Software That Shows!**



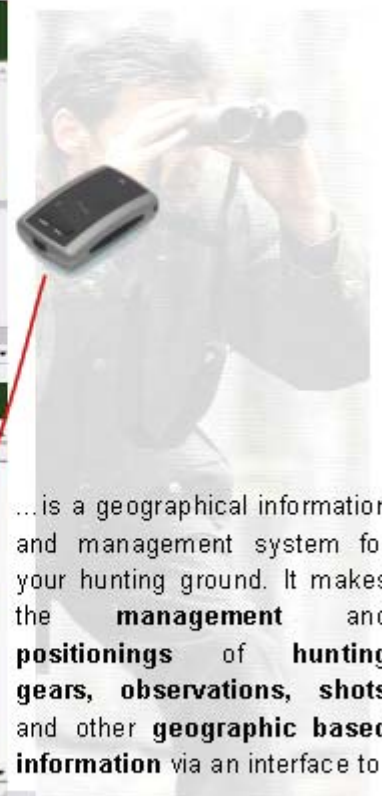
Example: Hunting GIS software in Austria - kettnerGIS

# Kettner GIS

## My hunting ground overview

Nr.	Datum	Erläuter.	Gew. Kg.	Kategorie	Bemerkung	Reib.I	Reib.II	Reib.III	Reib. Geß.	Reib. Tiere	Muffel...	Aueh.
<input type="checkbox"/> laufende Abschüsse <input type="checkbox"/> geplante Abschüsse <input type="checkbox"/> Abschussliste												
1	08.01.2008	Felle	13	Fellwild	Verkehr	1	3	2	0	1	1	0
2	12.01.2008	Huber	3	Beobachtung	keine Schussw.							
3	22.02.2008	Huber	14	Abschuss		2	4	3	2	3	2	1
4	22.02.2008	Felle	10	Abschuss		1	1	1	2	2	1	1
5	26.02.2008	Felle	35	Abschuss				1				
6	06.03.2008	Huber		Beobachtung						1		
7	17.03.2008	Huber	16	Abschuss		1						
8	17.03.2008	Huber	13	Abschuss			1					

**kettnerGIS LT**  
with Google Earth connection...



... is a geographical information and management system for your hunting ground. It makes the **management** and **positionings** of **hunting gears, observations, shots** and other **geographic based information** via an interface to

a GPS device (1-2 m positional accuracy also in forest) possible. All positionings are automatically collected in cartographic way as lines or points at kettnerGIS and/or Google Earth and visualized by using symbols and remarks. **Analysis** and reports like **shot lists**, documentation of **feed output** etc. are automatically generated as reports and provide a basis for the federal state specific shot lists.